



Work: **ISA8895 Implementation**  
Section: **Interoperability**  
Chapter: **B20**  
**Examples : Operations Schedule**  
Language: **English**  
Version: **V3 - 05/2011**



Jean Vieille

[www.syntrropicfactory.info](http://www.syntrropicfactory.info) [j.vieille@syntrropicfactory.info](mailto:j.vieille@syntrropicfactory.info)



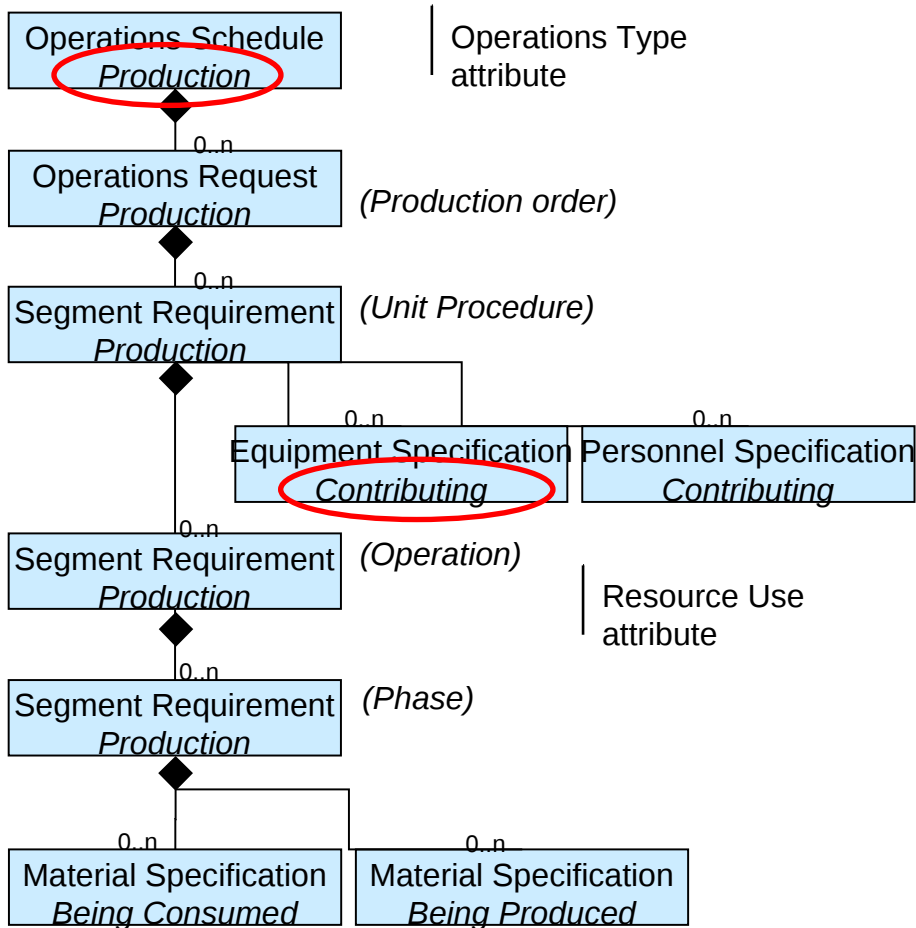
Research community [www.controlchainmanagement.org](http://www.controlchainmanagement.org)



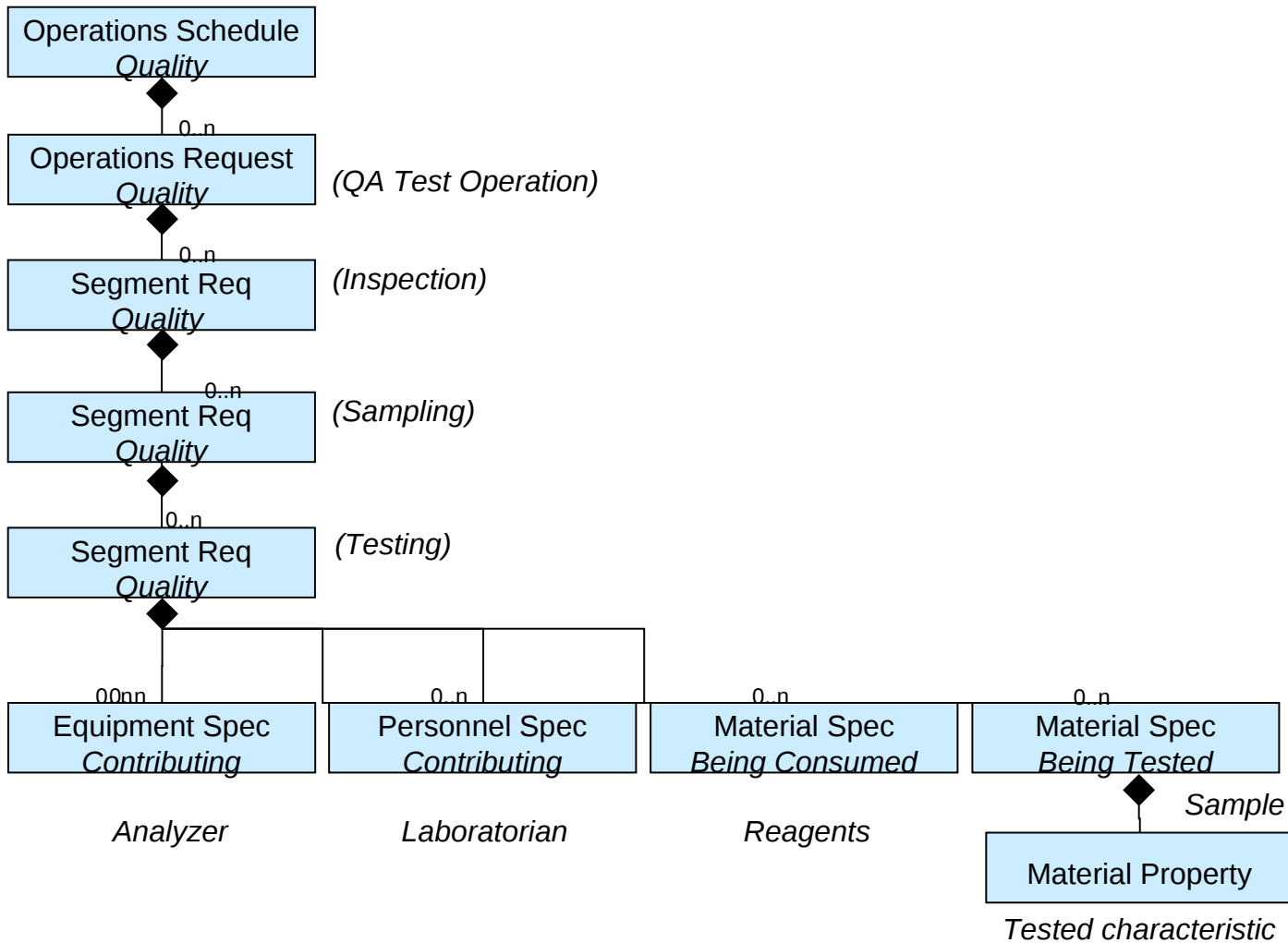
Consulting group [www.controlchaingroup.com](http://www.controlchaingroup.com)



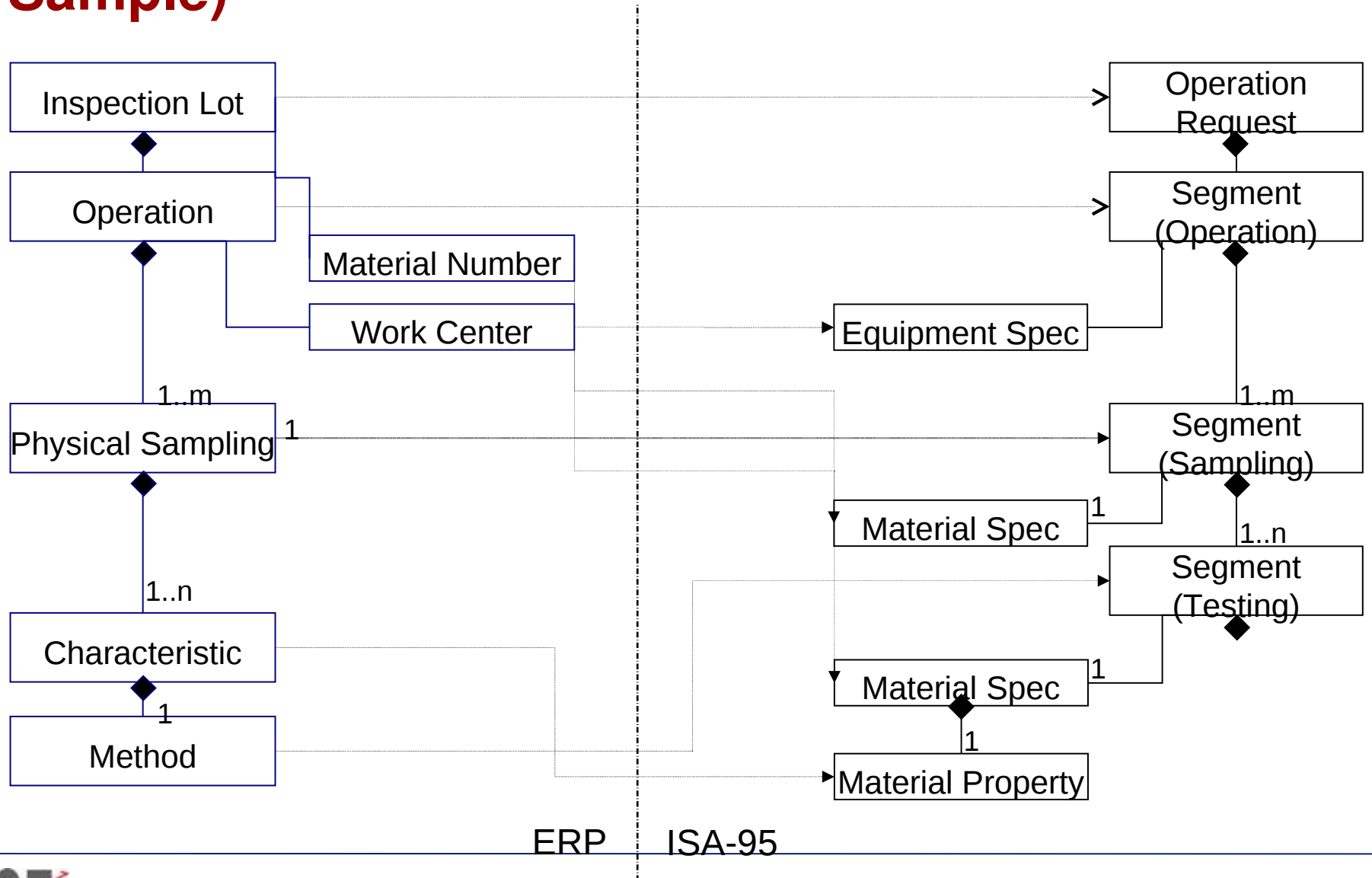
# Production Operations Schedule



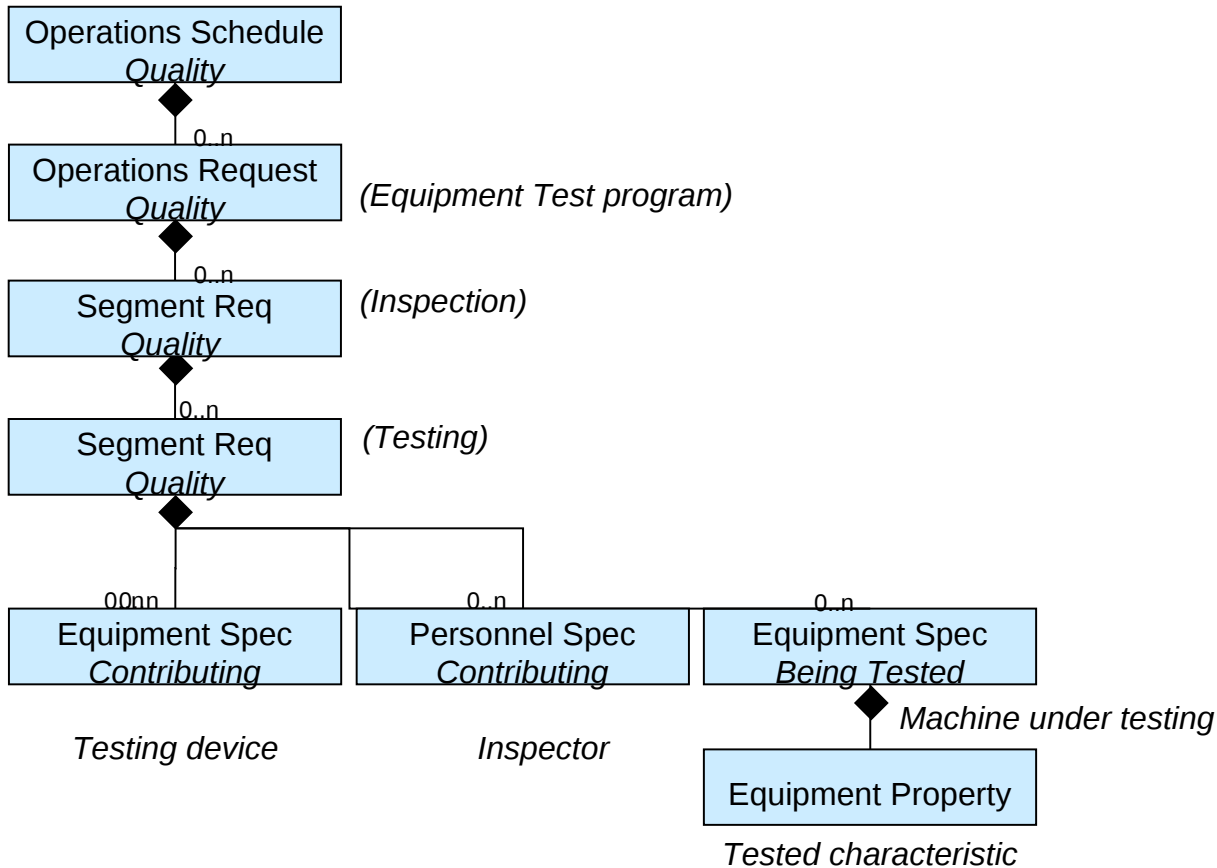
# Quality Operations Schedule (for Material)



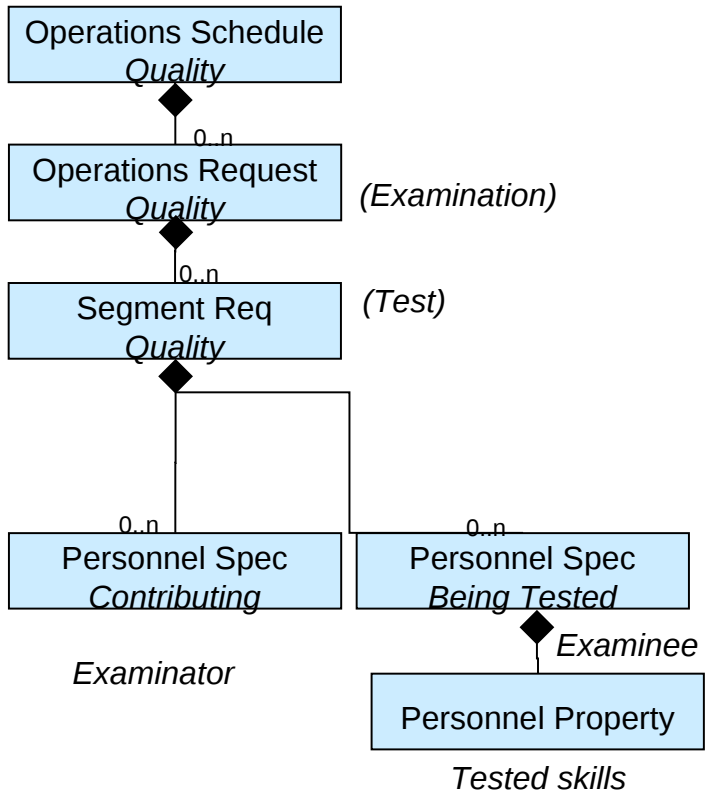
# Example of mapping SAP Inspection Lot (Physical Sample)



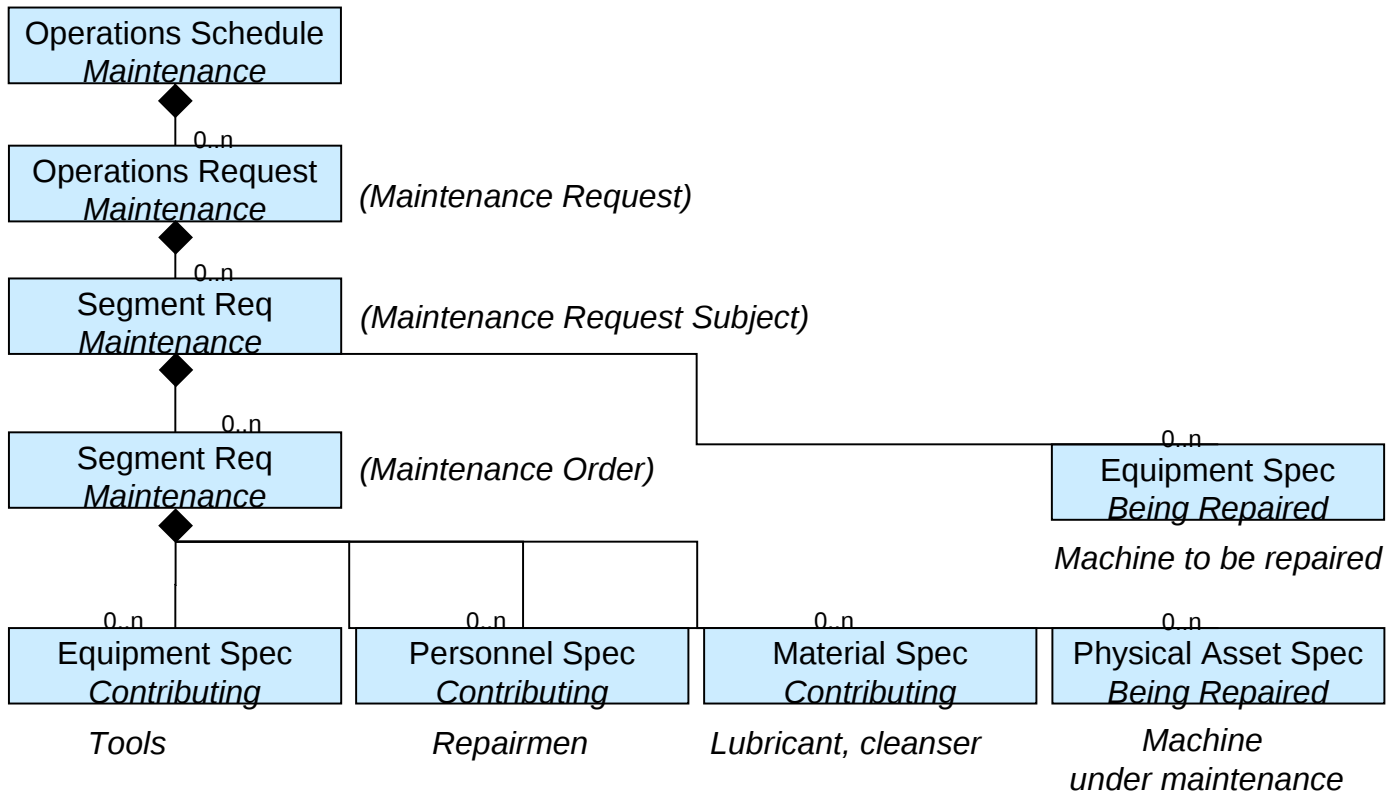
# Quality Operations Schedule (for Equipment)



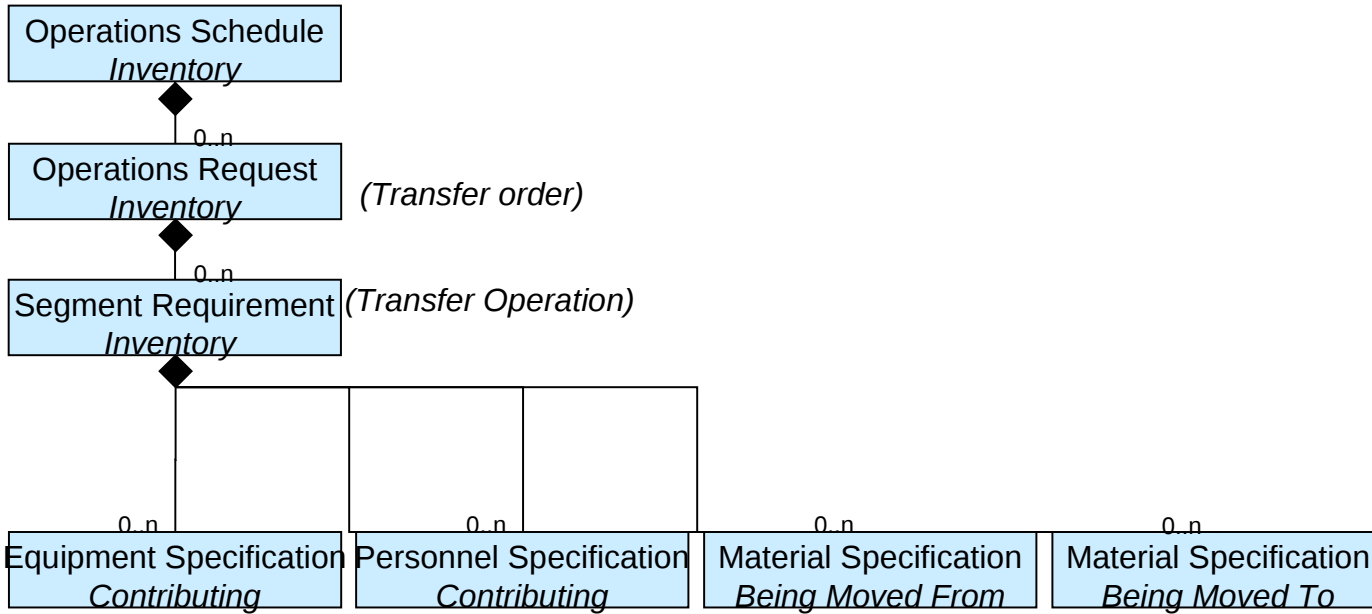
# Quality Operations Schedule (for Personnel)



# Maintenance Operations Schedule



# Inventory Operations Schedule



# Mixed Operations Schedule

